

# SPEC SHEET + MEASUREMENTS

PORT AUTHORITY.

Port Authority® Canvas Full-Length Two-Pocket Apron.  
A815

## Product photo

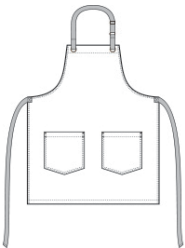


- 8.5-ounce, 100% cotton canvas
- Contrast 100% cotton webbing neck and waist ties
- Antique brass metal grommets and neck adjuster
- Two patch pockets with antique brass metal rivets
- 21.25"w x 30.25"l

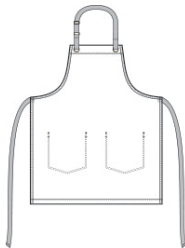
## CARE INSTRUCTIONS

Machine Wash Cold With Like Colors. Do Not Bleach. Tumble Dry Low. Remove Promptly. Cool Iron If Needed.

## Sketches



front



back

# SPEC SHEET + MEASUREMENTS

PORT AUTHORITY.

Port Authority® Canvas Full-Length Two-Pocket Apron.  
A815

## PRODUCT MEASUREMENTS

### OSFA

Apron Length 30 1/4

Apron Waist Width 30

Apron Width at Top 10 1/2

Apron Pocket Width - Wearers Left 8

**Apron Length:** Measure at Center Front from top edge of apron to hem.

**Apron Waist Width:** Measure under the waist straps straight across, edge to edge.

**Apron Width at Top:** Measure at top edge of apron, edge to edge.

**Apron Pocket Width - Wearers Left:** Measure from side to side- Left Pocket.

## COLORS



Black/ Stone  
PMS BLACK  
C



Duck Brown/  
Stone  
PMS 7568C



Magnet/ Stone  
PMS 7540C



River Blue  
Navy/ Stone  
PMS 533C